

OUTDOOR CATALOGUE



&Tradition®

INDEX

Ville by Anderssen & Voll

About Ville

About Anderssen & Voll

Design & Material Considerations

Thorvald by Space Copenhagen

About Thorvald

About Space Copenhagen

Design & Material Considerations

Material & Care

Teak

Powder Coated Steel

Webbing

Seat Pads & Cushions

Collection Overview

Ville Side Chair AV33 in Bronze Green | Ville Armchair AV34 in Bronze Green | Ville Table AV25 in Bronze Green | Ville Bench AV27 in Bronze Green | Como SC53 in Black



Ville by Anderssen & Voll

Ville embraces alfresco living with a blend of design and functionality, in a celebration of nature and materiality.

“The seat and backrest of the chair are a continuous piece, like a flying carpet bouncing off the more rigid steel frame. We needed the lasting solidity of the steel structures in the collection to balance out with the softer element of comfort found in the textile straps. We then looked to complement what we had by incorporating the warm touch of wood for the armrests, tabletops and seats.”

Together with the earthy tones evocative of grass, soil and foliage, Ville beckons you to feel at one with your surroundings, savouring the tranquil beauty of nature in any outdoor setting.

Ville Side Chair AV33 in the Oslo workshop of Anderssen & Voll

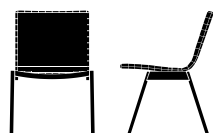


Ville Table AV25 in Black | Ville Bench AV27 in Black | Ville Side Chair AV33 in Black
Flowerpot VP9 in Chrome-plated

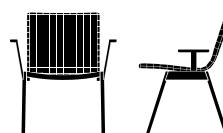


A comprehensive new product family designed for &Tradition, Ville is comprised of a stackable side chair, stackable armchair, and a dining table and bench in two sizes, with each piece meticulously crafted to invite users to experience moments of comfort in the outdoors.

Ville by Anderssen & Voll is a 6-piece outdoor collection rich in materiality, inspired by natural landscapes.



AV33
Ville Side Chair



AV34
Ville Armchair



AV25
Ville Table



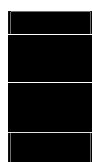
AV26
Ville Table



AV27
Ville Bench



AV28
Ville Bench



Ville Chair Cushion
for AV33 & AV34



Ville Bench Cushion
for AV27 & AV28





Anderssen & Voll

Based in Oslo, designers Torbjørn Anderssen and Espen Voll have been instrumental in putting Norway on the global design map ever since they joined forces in 2009.

Anderssen & Voll have received numerous international awards for their work within furniture, lighting and home accessories, including the Wallpaper* Design Awards, the Red Dot and iF Awards, as well as other accolades for Best Designs and Best Designers of the year — and yet they approach each new project with a feeling of freedom.



Ville Sidechair AV33 in Bronze Green | Ville Chair Cushion in Heritage Papyrus





Ville Table AV25 in Black | Ville Bench AV27 in Black | Flowerpot VP9 in Chrome-plated



Design & Material Considerations

In Ville, using untreated teak perfectly supports the purpose and function of the pieces. A natural, robust material, it endures weather well, is water resistant, and easy to maintain. As it ages, over time its original colour will fade to a graceful silver patina without compromising strength or the structural integrity of the design. A key consideration was to ensure responsible sourcing of the raw material.



The wood was obtained with respect towards fragile forest ecosystems and local communities from responsibly managed and other controlled sources — as verified by an FSC® certification.

An underlying focus on durability over time continues in the metal elements of the collection. The solid steel structures are durable against weather, corrosion and can withstand the test of time. The set is fully designed for disassembly which enables easier repair and renovation, in turn prolonging the total lifespan and functionality of the pieces. At the eventual end of their use, the steel, teak and polyester can be separated and responsibly recycled, to enter another production cycle as resources.



The Ville AV25, AV26 tables and AV27, AV28 benches are EU Ecolabel certified, meeting the highest standards of durability, circular design, and responsible use of chemicals throughout the product's full life cycle.

Visit www.eublomsten.dk for more information.

Ville Armchair AV34 in Bronze Green | Ville Table AV25 in Bronze Green |
Ville Bench AV27 in Bronze Green | Flowerpot VP9 in Matt Light Grey



“There is a certain detail that is repeated throughout the collection and that is the transition between the legs and the horizontal rails — which can be seen in the chairs, the table and the benches.”

Ville Bench AVZ7 in Bronze Green





Ville's material exploration plays a pivotal role in both its functionality and visual identity. Each piece in the collection is grounded by a sleek steel frame to ensure a solid and sturdy base. Incorporating the use of wood, Anderssen & Voll's signature material, the tabletop and bench seating areas are crafted from teak to provide a warm surface. The side chair and armchair's flexible seat and backrest are made of polyester webbing which adapts to body temperature, ensuring comfort regardless of the climate. Finally, likened to a firm, warm handshake, the armchair's wooden armrests work to welcome users to outdoor lounging while creating a subtle sense of visual cohesion.

“The Ville collection is a manifestation of our vision to make outdoor pieces that make you feel at one with your surroundings, allowing you to savour the tranquil beauty of the natural world in every setting.”



Ville Table AV25 in Black | Ville Armchair AV34 in Black







Ville Armchair AV34 in Bronze Green

“When we design, we are motivated by making beautiful things with a clear idea. The inspiration for the Ville series was partly the principle of vertical stacking. We started off by sketching the chair and the whole concept was pretty much present in the first drawing.”

To facilitate easy storage between seasons, the Ville chairs and armchairs slot on top of each other one by one vertically to ensure as little space as possible is required. The pieces stack with aligned precision in up to 8 pieces.

“In order to fit the pieces into the various outdoor settings we chose colours and materials that work well with soil, grass and the foliage of trees and plants.”

Each piece in the collection is available in either Warm Black or Bronze Green, two shades that were chosen to subtly complement open air spaces.



Ville Table AV25 in Black | Ville Armchair AV34 in Black





Ville Bench AV27 in Black



Ville Bench AV27 in Black | Ville Bench Cushion SC95 in Heritage Papyrus

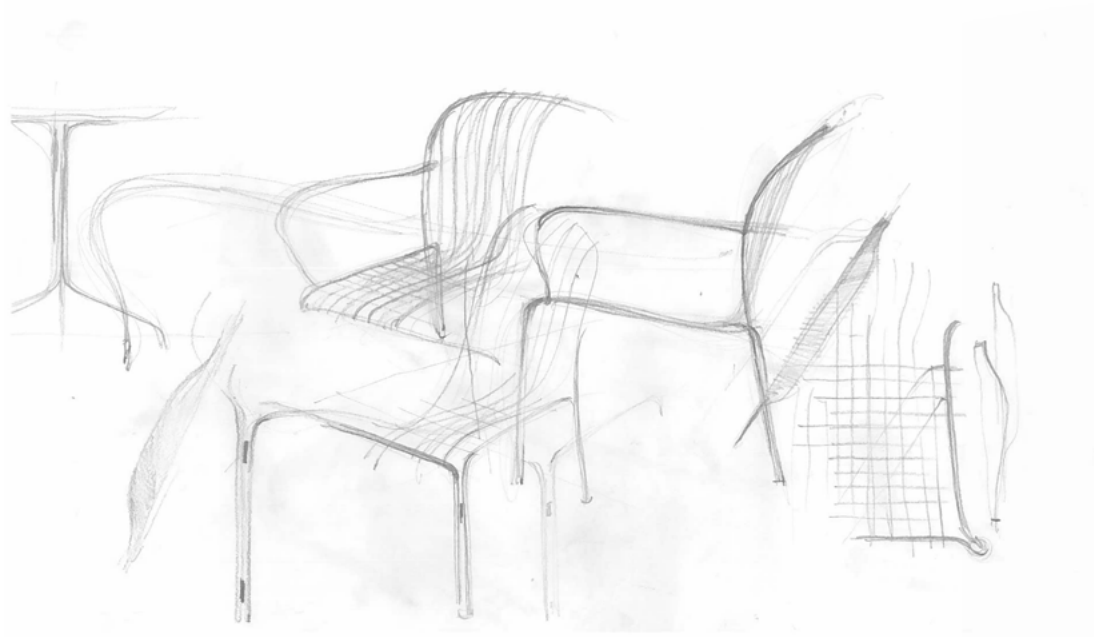


Thorvald Lounge Chair with arms SC101 in Bronze Green | Thorvald Side Table SC 102 in Bronze Green



Thorvald by Space Copenhagen

Thorvald is a tribute to Copenhagen's renowned neoclassical artist and sculptor, Bertel Thorvaldsen and the mosaic motifs of his eponymous museum. The sculptural silhouettes and graphic grid elicit an elegant interplay of light and shadows, allowing the pieces to effortlessly intermingle with their surroundings. The collection reflects the designers' intuitive understanding of how objects evoke emotions, and our own desire to encourage the art of outdoor living anywhere in the world. Inspiring you to pause and indulge in the moment.

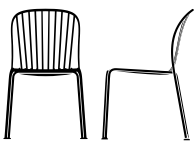


Thorvald Side Chair - SC94 in Black | Thorvald Armchair - SC95 in Black | Thorvald Cafe Table - SC96 in Black

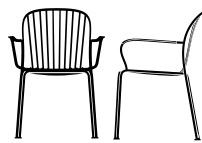


Configured for comfort, stability and versatility, the Thorvald Collection features a stackable side chair and armchair, two café tables, a dining table, a stackable lounge chair and a side table, in Warm Black, Bronze Green or Ivory. Seat pads and cushions are available for extra comfort, in a neutral colour and pattern.

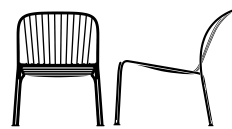
Thorvald is a complete collection of 8 pieces, the lightness adds to their agility, allowing for easy placement in nature and urban settings, for private purposes or hospitality settings.



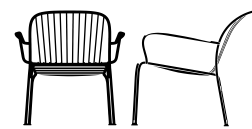
SC94
Side Chair



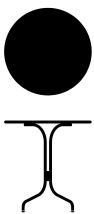
SC95
Armchair



SC100
Lounge Chair



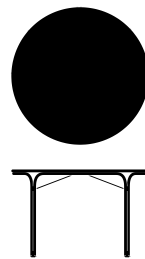
SC101
Lounge Chair with arms



SC96
Café Table



SC97
Café Table



SC98
Dining Table



SC102
Side Table



Thorvald Cushion & Seat Pad
for SC94 & SC95



Thorvald Cushion & Seat Pad
for SC100 & SC101



Thorvald Armchair SC95 in Ivory | Thorvald Chair Cushion in Heritage Papyrus

Thorvald Dining Table SC98 in Ivory | Thorvald Armchair SC95 in Ivory



Space Copenhagen

Founded in 2005, Space Copenhagen is a design studio that works across multiple disciplines, from furniture and lighting to art installations and interior design. The studio's commitment to quality and longevity results in contemporary designs with timeless appeal.

Signe Bindslev Henriksen and Peter Bundgaard Rützou's creative language has now been translated into an elegant outdoor collection, inspired by cityscapes and Copenhagen's urban architecture. Inside this catalogue you'll find details on their 2024 Thorvald collection for &Tradition.



Thorvald Side Chair SC94 in Ivory | Thorvald Chair-Seat Pad in Heritage Papyrus | Thorvald Side Table SC102 in Ivory





Thorvald Armchair SC95 in Ivory

Thorvald Dining Table SC98 in Bronze Green | Thorvald Armchair SC95 in Bronze Green |
Thorvald Side Table SC102 in Bronze Green



Design & Material Considerations

The solid steel in Thorvald has a delicate expression while ensuring high stability and durability in outdoor environments. The surfaces are additionally reinforced against corrosion and wear, ensuring a long lifespan. This direction falls in line with our desire to think about our products, and all their components', entire life cycle – including their afterlife. Fully designed for disassembly, the pieces can be repaired, and parts can be replaced if needed. Similarly, the gliders can be removed as well as switched out. The mono-material steel frames can be recycled at the end of their life. Historically used and re-used in multiple production cycles, steel's unique properties remain unchanged during the recycling process, enabling it to exist in another production cycle and in turn reducing the need for additional raw materials.

The seat pads and cushions are upholstered in highly durable outdoor fabrics, Heritage Papyrus and Marquetry Bora. Safeguarding the promise of producing with no harmful substances or compounds unsafe to air quality, the fabrics are OEKO-TEX® 100 and Greenguard Gold certified.

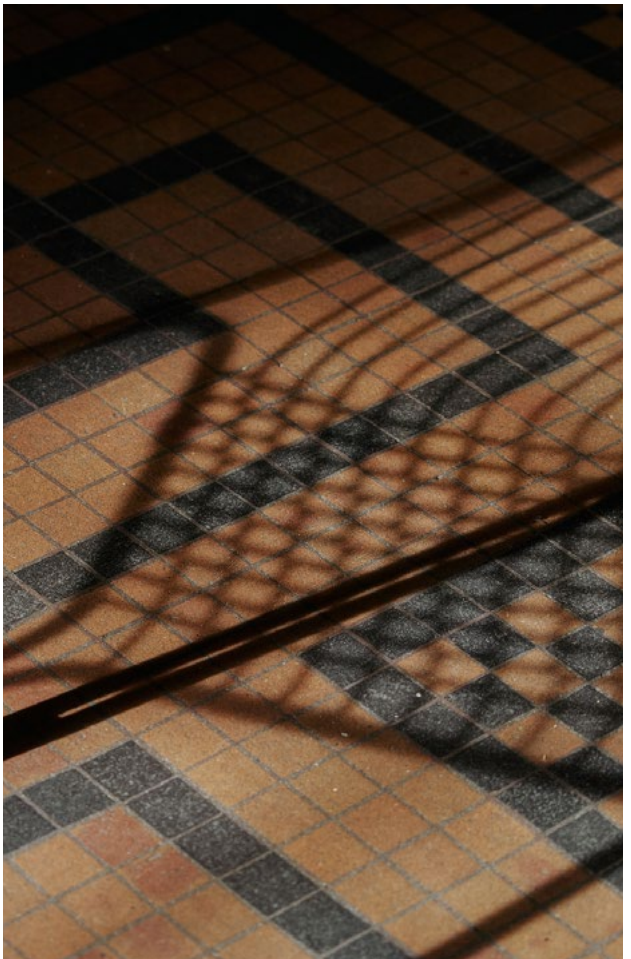
Thorvald Lounge Chair SC100 in Ivory



Thorvald Dining Table SC98 in Ivory | Thorvald Armchair SC95 in Ivory | Thorvald Side Chair SC94 in Ivory | Thorvald Side Table SC102 in Ivory | Como SC53 in Aluminium



Thorvald Side Chair- SC94 in Ivory



A series of sculptural silhouettes, the Thorvald Collection is a nod to Bertel Thorvaldsen's mastery of form, rhythmic lines, and the Copenhagen museum that houses his extraordinary works of art. These facets culminate in a versatile collection that encourages outdoor living — anywhere in the world.

The Thorvaldsen's Museum was built in 1848 next to Copenhagen's Christiansborg Palace as a framework for the artist's oeuvre. Taking its cue from the art of antiquity, referencing ancient Greece, Egypt and Pompei, the decorative ceilings, multi-chromatic motifs, and mosaic floors provide a picturesque backdrop in contrast to Thorvaldsen's neo-classical statues and pristine sculptural style.

Deeply inspired by the museum, Space Copenhagen's design of the Thorvald Collection captures this contrast between the mosaic patterns and the repetitive structures of the building, expressed in the collection's steel frame and grid seating. At the same time, the collection alludes to the lyrical lines, curves and classic, romantic imagery of the sculptor's work. The result is an exquisite aesthetic able to project an interplay of light and shadows. The airy appearance and soft, inviting silhouettes effortlessly intermingle with their surroundings while maintaining a distinctive look.

Thorvald Armchair SC94 in Bronze Green | Thorvald Side Chair SC94 in Bronze Green
Thorvald Café Table SC96 in Bronze Green | Como SC53 in Aluminium





Known for their in-depth understanding of how objects evoke emotions, Space Copenhagen founders Signe Bindslev Henriksen and Peter Bundgaard Rützou clarify:

“Design is about emotions and intuition. Many of us are living in cities in a modern world defined by a dynamic lifestyle and speed, where connecting with the environment and the seasons becomes increasingly important for our physical and mental well-being. For the collection, it was key to find the right balance between the tangible, the easy functionality, and the intangible, the dreamy, more poetic features.”

Reflecting the designers’ affinity for concepts with an equilibrium of opposites, the chairs’ transparent-like countenance is juxtaposed against the tabletops, which are solid in various-sized shapes. Much like Thorvaldsen’s sculptures, each piece is designed to be appealing from any angle.



Thorvald Dining Table SC98 in Black | Thorvald Armchair SC95 in Black |
Thorvald Side Chair SC94 in Black | Como SC53 in Aluminium





Thorvald Armchair SC95 in Black

Thorvald Lounge Chair with arms SCI01 in Bronze Green | Thorvald Side Table SCI02 in Bronze Green





The process was relatively complex as Bindslev Henriksen and Bundgaard Rützou needed to solve a number of different challenges that arose while designing the collection, both that it was kept sculptural and intuitive, as well all functional, stackable and durable — and all the other aspects that can be expected of an outdoor piece of furniture.

“Physically and mentally, we’ve really felt that this collection was our little way into the more dreamy and more intuitive ways of approaching outdoor and bringing it into our modern lives.”





MATERIAL CONSIDERATIONS

Choosing steel for the base allowed us to create two elegant outdoor collections with lasting solidity. The material's durability, coupled with its pliability, made it possible to create precise and intricate, fluid-like forms that closely depicted the designers' original sketches. While the detail of the metalwork is the focal point of the Thorvald collection, teak introduces an additional layer of warmth to the Ville collection, bringing a softer character to its otherwise bold form.

Finally, the Ville chairs' seat and backrest, reminiscent of the classic textile furniture webbing, has been adapted to outdoor environments through the intentional use of polyester - a material which intuitively moulds to the individual's body and can withstand the elements.

Creating a comfortable world with enduring qualities and originality has always been at the heart of &Tradition. With 14 pieces added to our current outdoor offering, we hope these new designs will become a key-part in the lives and memories of their owners.



EU Ecolabel : DK/049/042

The Ville AV25, AV26 tables and AV27, AV28 benches are EU Ecolabel certified, meeting the highest standards of durability, circular design, and responsible use of chemicals throughout the product's full life cycle. Visit www.eublomsten.dk for more information.

TEAK

As teak is a natural material, it can exhibit variations in both colour and texture from piece to piece. The teak used in the Ville collection is untreated and therefore will develop a silver-grey patina over time.

This hardwood possesses natural oils and tight grain patterns that make it resistant to rot and decay, making it an ideal choice for outdoor furniture.

CARE & CLEANING

To preserve or enhance the original colour of the teak Ville's tables and benches, apply furniture oil regularly. It is also possible to sand the wood to restore its original colour. Exposure to the elements may cause minor cracks and veins to rise in the products, but this will not affect overall design or durability. During winter we recommend storing your furniture in an unheated shelter. Protect it from water exposure to prevent discolouration.

To clean both treated and untreated teak, begin by brushing or dusting off any debris with a soft, dry cloth. Next, wipe the surface using another soft cloth or sponge dampened in a mild cleaning solution. Ensure no soapy residue remains on the teak, then leave to dry naturally or wipe down.



The mark of
responsible forestry

Our FSC® certified teak has been harvested with consideration towards fragile forest ecosystems and local communities, supporting responsible environmental, social and economical management of the world's forests. Visit www.fsc.org





POWDER COATED STEEL

Both Ville and Thorvald collections are made from powder-coated steel. Powder coating is a safe, dry finishing process that uses finely ground particles of pigment and resin to create a protective finish. Powder coating adds to the steel's durability, helping it to withstand damages better and last longer, and provides an additional protective barrier that helps prevent corrosion.

CARE & CLEANING

Because of its durability and resistance to abrasion and corrosion, powder coated steel requires little to no maintenance. Wipe the furniture with a soft cloth wrung in warm water and a mild detergent. To avoid damaging the surface, do not use harsh or abrasive chemicals. After cleaning, rinse with water to remove any residue and ensure the furniture is completely dry to prevent water spots.

WEBBING

The seat and back of the Ville chairs are made of polyester webbing. Polyester is a synthetic textile and polymer known for its durability and versatility. Reliable and easy to work with, its moisture-wicking properties and relative resistance to fading make it a practical material to use in outdoor furniture.

CARE & CLEANING

To avoid collecting dust and debris in between the polyester webbing, dust or vacuum frequently. Gently blot any spots or stains with a clean, damp cloth or sponge wrung in water and a mild cleaning solution. Avoid harsh or abrasive cleaners or excessive moisture, as they can damage the webbing. While polyester is known to be highly fade-resistant, we always advise against prolonged exposure to heat and direct sunlight and to store in a cool, dry place when not in use. Please note that if used frequently, over time the webbing's tension may loosen slightly.





SEAT PADS AND CUSHIONS

The seat pads and cushions for both the Thorvald and Ville chairs and benches are made from a selection of cutting edge acrylic based textiles. Breathable and comfortable in outdoor use, they are also durable and practical. The fibres are resistant to discolouration caused by UV rays, water repellent, stain proof and protected against mould and mildew, as well as easy to clean. The textiles do not contain harmful chemicals as verified by OEKO-TEX® 100 and Greenguard Gold certifications.



STANDARD
100



Heritage Papyrus:

Made from up to 50% recycled fibre, Heritage Papyrus is a warm beige fabric chosen by &Tradition for its ability to act as a complementary addition to our outdoor ranges and the variety of spaces they may occupy. Working upon a solid neutral-toned based, this fabric introduces accents with slight variations in colour, resulting in a modern twist.

Marquetry Bora:

Marquetry Bora is an option for those looking to introduce a pattern into their outdoor space. Featuring a repeating motif which adds a touch of colour to our outdoor ranges, the fabric's design was chosen for its timeless appeal and its ability to work in tandem with both the furniture and our other fabric selection, Heritage Papyrus.

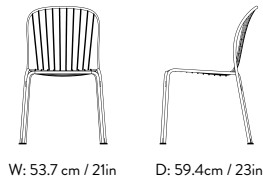
CARE & CLEANING

Spills should be blotted with a clean, dry cloth, please avoid rubbing the spill site. Oil based spills may be treated with corn starch to absorb the excess substance, which should afterwards be removed with a straight edge tool. Regular cleaning includes using a mild solution of soap and water, thoroughly rinsing off, then air drying.



Thorvald SC94

Design Space Copenhagen | 2024
Description Side chair, outdoor
Materials Powder coated steel
Variants Warm Black, Bronze Green, Ivory
Product details Weatherproof outdoor powder coating
 Approved for contract use
 Made for disassembly
 Stackable up to 6 pcs

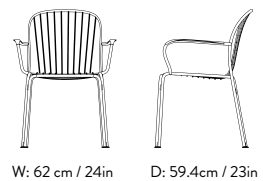


H: 83.8cm / 33in
 Seat height: 45.9cm / 18in

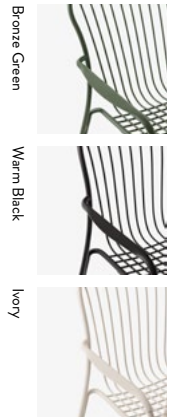


Thorvald SC95

Design Space Copenhagen | 2024
Description Armchair, outdoor
Materials Powder coated steel
Variants Warm Black, Bronze Green, Ivory
Product details Weatherproof outdoor powder coating
 Approved for contract use
 Made for disassembly
 Stackable up to 6 pcs

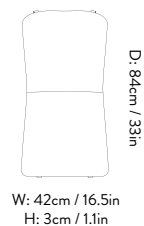


H: 83.8cm / 33in
 Armrest height: 66cm / 26in
 Seat height: 45.9cm / 18in

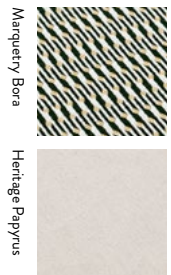


Thorvald Chair Cushion

Design Space Copenhagen | 2024
Description Cushion for Thorvald SC94 & SC96
Materials Foam, wadding, fabric and metal buttons
Variants Heritage Papyrus, Marquetry Bora
Product details Water repellent & stain proof
 OEKO-TEX® 100 & Greenguard Gold
 (fabric only)



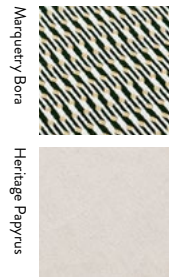
D: 84cm / 33in





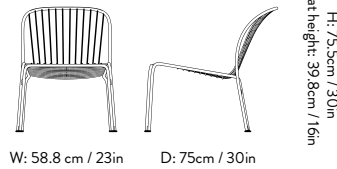
Thorvald Chair Seat Pad

Design Space Copenhagen | 2024
Description Seat Pad for Thorvald SC94 & SC96
Materials Foam, wadding, fabric and metal buttons
Variants Heritage Papyrus, Marquetry Bora
Product details Water repellent & stain proof
 OEKO-TEX® 100 & Greenguard Gold (fabric only)



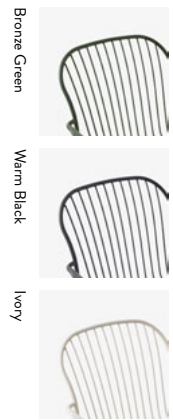
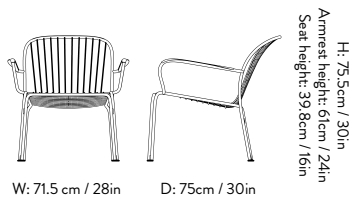
Thorvald SC100

Design Space Copenhagen | 2024
Description Lounge Side Chair, outdoor
Materials Powder coated steel
Variants Warm Black, Bronze Green, Ivory
Product details Weatherproof outdoor powder coating
 Approved for contract use
 Made for disassembly
 Stackable up to 2 pcs



Thorvald SC101

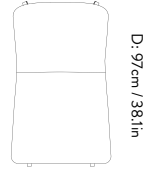
Design Space Copenhagen | 2024
Description Lounge Chair with arms, outdoor
Materials Powder coated steel
Variants Warm Black, Bronze Green, Ivory
Product details Weatherproof outdoor powder coating
 Approved for contract use
 Made for disassembly
 Stackable up to 2 pcs



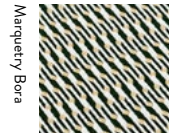


Thorvald Lounge Chair Cushion

Design Space Copenhagen | 2024
Description Cushion for Thorvald SC100 & SC101
Materials Foam, wadding, fabric and metal buttons
Variants Heritage Papyrus, Marquetry Bora
Product details Water repellent & stain proof
 OEKO-TEX® 100 & Greenguard Gold (fabric only)



D: 97cm / 38.1in
 W: 53cm / 20.8in
 H: 3cm / 1.1in



Marquetry Bora

Heritage Papyrus

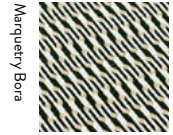


Thorvald Lounge Chair Seat Pad

Design Space Copenhagen | 2024
Description Seat Pad for Thorvald SC100 & SC101
Materials Foam, wadding, fabric and metal buttons
Variants Heritage Papyrus, Marquetry Bora
Product details Water repellent & stain proof
 OEKO-TEX® 100 & Greenguard Gold (fabric only)



D: 53cm / 20.8in
 W: 53cm / 20.8in
 H: 3cm / 1.1in



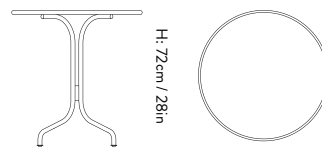
Marquetry Bora

Heritage Papyrus



Thorvald SC96

Design Space Copenhagen | 2024
Description Café Table Round Ø70
Materials Powder coated steel
Variants Warm Black, Bronze Green, Ivory
Product details Weatherproof outdoor powder coating
 Approved for contract use
 Made for disassembly



H: 72cm / 28in

W: 70cm / 28in



Bronze Green

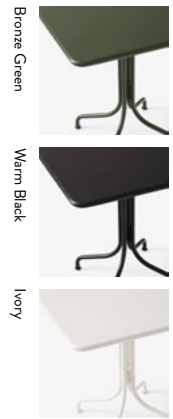
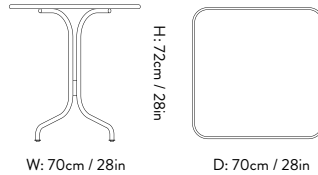
Warm Black

Ivory



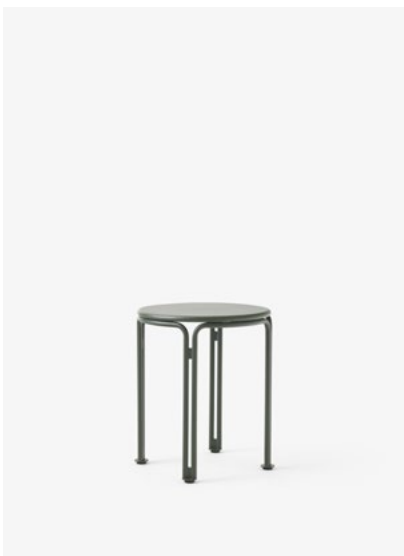
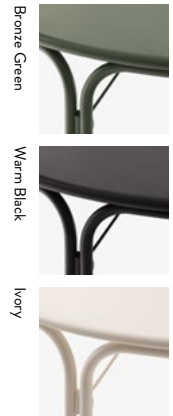
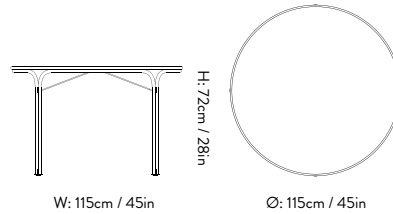
Thorvald SC97

Design Space Copenhagen | 2024
Description Café Table Square 70x70
Materials Powder coated steel
Variants Warm Black, Bronze Green, Ivory
Product details Weatherproof outdoor powder coating
 Approved for contract use
 Made for disassembly



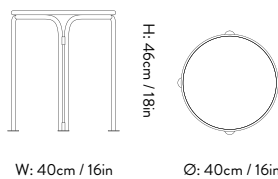
Thorvald SC98

Design Space Copenhagen | 2024
Description Dining Table Round Ø115
Materials Powder coated steel
Variants Warm Black, Bronze Green, Ivory
Product details Weatherproof outdoor powder coating
 Approved for contract use
 Made for disassembly



Thorvald SC102

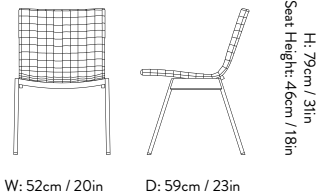
Design Space Copenhagen | 2024
Description Side Table
Materials Powder coated steel
Variants Warm Black, Bronze Green, Ivory
Product details Weatherproof outdoor powder coating
 Approved for contract use
 Made for disassembly





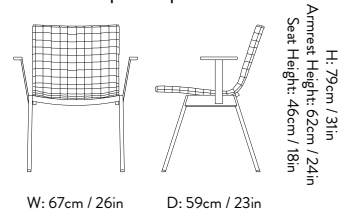
Ville AV33

Design Andersen & Voll | 2024
Description Side chair, outdoor
Materials Powder coated steel, Webbing
Variants Warm Black, Bronze Green
Product details Weatherproof outdoor powder coating
 Approved for contract use
 Made for disassembly
 Stackable up to 8 pcs



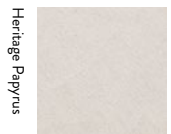
Ville AV34

Design Andersen & Voll | 2024
Description Armchair, outdoor
Materials Teak wood, Powder coated steel, Webbing
Variants Warm Black, Bronze Green
Product details FSC® certified teak wood
 Weatherproof outdoor powder coating
 Approved for contract use
 Made for disassembly
 Stackable up to 8 pcs



Ville Chair Cushion

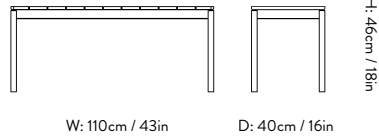
Design Andersen & Voll | 2024
Description Cushion for Ville AV33 & AV34
Materials Foam, wadding, fabric and metal buttons
Variants Heritage Papyrus
Product details Water repellent & stain proof
 OEKO-TEX® 100 & Greenguard Gold
 (fabric only)





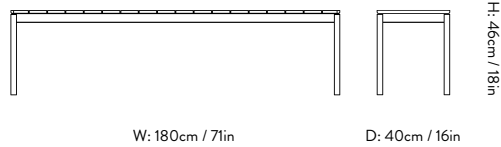
Ville AV27

Design Andersen & Voll | 2024
Description Bench
Materials Teak wood, Powder coated steel
Variants Warm Black, Bronze Green
Product details FSC® certified teak wood
 EU Ecolabel certified (DK/049/042)
 Weatherproof outdoor powder coating
 Approved for contract use
 Made for disassembly



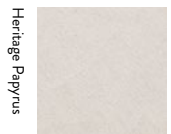
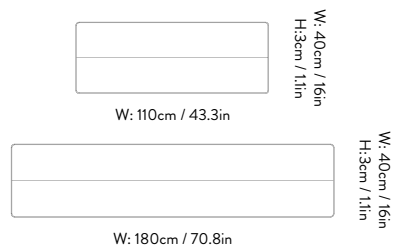
Ville AV28

Design Andersen & Voll | 2024
Description Bench
Materials Teak wood, Powder coated steel
Variants Warm Black, Bronze Green
Product details FSC® certified teak wood
 EU Ecolabel certified (DK/049/042)
 Weatherproof outdoor powder coating
 Approved for contract use
 Made for disassembly



Ville Bench Cushion

Design Andersen & Voll | 2024
Description Cushion for Ville AV27 & AV28
Materials Foam, wadding, fabric and metal buttons
Variants Heritage Papyrus
Product details Water repellent & stain proof
 OEKO-TEX® 100 & Greenguard Gold (fabric only)





Ville AV25

Design

Andersen & Voll | 2024

Description

Table, outdoor

Materials

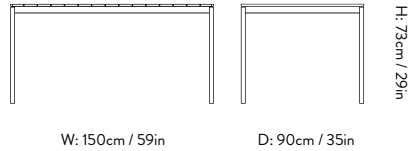
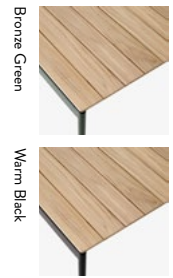
Teak wood, Powder coated steel

Variants

Warm Black, Bronze Green

Product details

FSC® certified teak wood
EU Ecolabel certified (DK/049/042)
Weatherproof outdoor powder coating
Approved for contract use
Made for disassembly



Ville AV26

Design

Andersen & Voll | 2024

Description

Table, outdoor

Materials

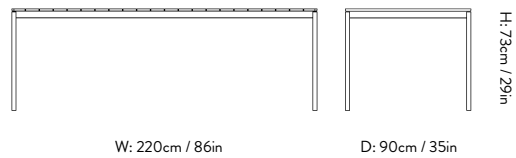
Teak wood, Powder coated steel

Variants

Warm Black, Bronze Green

Product details

FSC® certified teak wood
EU Ecolabel certified (DK/049/042)
Weatherproof outdoor powder coating
Approved for contract use
Made for disassembly





With a passionate approach to masterly design, we preserve icons of the past whilst creating the classics of tomorrow, bringing you a collection infused with enduring qualities that work to connect people and places.

Always respectfully, always made to last.