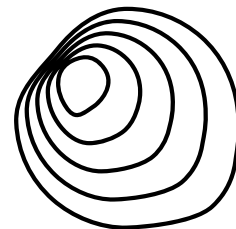


BROKIS® CATALOGUE



BROKIS®

**A TRADITIONALLY
CRAFTED CONTEMPORARY
VISION OF LIGHT**



PRESERVING THE BOHEMIAN GLASSBLOWING TRADITION

BROKIS – a synthesis of exquisite design, superior quality, and the skill of master artisans continuing the centuries-old Bohemian glassmaking tradition. BROKIS lighting collections have achieved international acclaim by combining handblown glass with other refined materials, such as handcrafted wood and metal, in bold compositions that push the boundaries not only of contemporary lighting design but of the technologies applied in production. The family-run premium brand works with select designers from around the world and operates its own historical glassworks southeast of Prague.

BROKIS is the brainchild of successful Czech entrepreneur Jan Rabell. In 2006, he founded the brand as a platform to revitalize and elevate Bohemian glassmaking to new heights and preserve generations of knowledge and craftsmanship. Nearly ten years prior, in 1997, he acquired the ailing Janštejn Glassworks, which was established at the start of the 19th century approximately 140 kilometres southeast of Prague.

Demand for traditional products had declined significantly, many of the glassmakers were growing old and leaving, and time-honoured technologies and techniques were at risk of being lost. Mr. Rabell's vision was to restore the factory to its former prestige and ensure that the ages-old Bohemian glassmaking tradition endured into the 21st century.

With BROKIS, Jan Rabell created a lighting brand offering entirely different products than those previously produced at Janštejn Glassworks. Several new Italian-style furnaces were built, and production techniques were refined. Some, such as grinding and glass painting, were discontinued, and others were revived, like glassblowing using optic moulds and traditional hotshop techniques. Original and nearly forgotten formulas for manufacturing coloured glass were reinstated and are now characteristic of the BROKIS brand. Therefore, it brings us great

joy that in 2023 Czech handmade glass was inscribed in UNESCO's Representative List of the Intangible Cultural Heritage of Humanity.

BROKIS has firmly established itself as a leading innovator in glass lighting. For example, the complex technology applied in manufacturing the Night Birds collection, which consists of imposing yet elegant curved glass silhouettes of birds in various phases of flight, required two years of experimentation to perfect.

BROKIS is constantly developing new technologies for its lights in order to offer consistent industry-leading quality and innovation throughout its global product portfolio, such as with a special original connector, the sustainable material called BROKISGLASS, and TRIMLESS, a sleek new system for hanging pendent lights from lowered drywall ceilings. BROKIS has also recently developed a series of configurators for some of its most popular collections. These powerful online tools let customers create their very own bespoke lighting compositions in a user-friendly, intuitive interface.

BROKIS also maintains a strong online presence through a series of innovative initiatives, such as BROKIS VIRTUAL PROJECTS and the unique MyBrokis application. In January of 2022, BROKIS launched a website within Janštejn Glass Group (JGG). Today, BROKIS and Janštejn Glassworks employ more than 100 people and enjoy a unique symbiosis that has allowed BROKIS to establish sales operations in 120 countries and regularly showcase its renowned lighting collections at the world's top design shows.



PEOPLE

JAN RABELL

**“NOTHING’S IMPOSSIBLE;
NEVER SAY IT CAN’T BE DONE.”**

Entrepreneur Jan Rabell is one of the most dynamic figures in the Czech Republic’s glassmaking industry. Born in Prague in 1965 to a Puerto Rican father and Czech mother, he grew up in his father’s homeland, later returning to Prague to pursue a master’s degree in economics. He went on to hold various managing director posts in the field of finance and banking. In 1997, he purchased the ailing Janštejn Glassworks and set about restoring its prestige and competitiveness primarily by introducing unconventional glassblowing techniques and production technologies.

In 2006, he founded the family-run premium glass lighting brand BROKIS, quickly developing it into one of the most important players in the market and exporting its products around the world. Mr Rabell’s charisma, energy, and innovative vision continue to propel BROKIS and Janštejn Glassworks steadily forward.

LUCIE KOLDOVA

**“I SEE A LIGHT AS A SCULPTURE, AN
OBJECT RADIATING ENERGY. I SHAPE
THE ENERGY OF LIGHT THROUGH THE
RELATIONSHIP BETWEEN THE SOURCE
AND THE GLASS.”**

BROKIS art director Lucie Koldova is an acclaimed Czech product and furniture designer. Her collaboration with the lighting brand began in 2010 with the timeless Muffins and Balloons collections, which she designed while living and working in Paris.

The voluminous glass lights embody her charismatic, elegant style and quickly established BROKIS as an innovative producer of handblown glass lighting. She is the creative force behind the brand and is instrumental in shaping its product portfolio and image. Her creations, objects of desire, include glass sculptures, glass lighting, poetic gallery pieces, and limited-series works.

Breathtaking colours, unusual proportions, and vibrant formal contrasts move her work seemingly beyond the realm of the possible, a trademark at once apparent in lighting collections such as Balloons, Macaron, Puro, and Ivy. In addition to developing ever- more novel and exciting motifs, Lucie Koldova has introduced important technological and formal solutions that have enabled BROKIS to push the limits of handblown glass production.





SUSTAINABILITY

In terms of ecology, BROKIS has come a long way since it was established in 2010. BROKISGLASS has brought about a significant reduction in waste material. The transformation of glass shards into a new decorative product represents an environmentally friendly and efficient upcycling of material, thanks to which the glassworks is able to employ a strategic circular economy and thus contribute to the cultivation of a healthy relationship between nature and humans. The brand has also developed new glass blends that can be added to other materials, such as concrete, in order to achieve maximum possible reuse of waste glass shards.



UNESCO

In 2023, handmade glass was inscribed in UNESCO's Representative List of the Intangible Cultural Heritage of Humanity. From the very inception of the BROKIS brand, its defining mark has been superior quality in glass artistry and manufacturing. For several centuries, Bohemian glassmaking has been synonymous with unsurpassed quality and beauty. Today, it is an inseparable part of the cultural legacy of the Czech nation, and we are thrilled that it has been recognized on a global level by UNESCO as a significant manifestation of humanity's living heritage.



VIRTUAL PROJECT

BROKIS is introducing special online spaces created to underscore the singularity of each of our lighting compositions. These exclusive virtual projects showcase our collections in realistic interior and exterior settings designed to evoke a wide range of emotions. BROKIS has devoted considerable attention to the various advantages of using virtual projects, one of which is the ease of access to necessary architecture files, technical documentation, and BROKIS innovations. The virtual projects were created by the studios Salaris and Suprema in close collaboration with BROKIS.



BROKIS STORYLINE

In mid-2023, BROKIS organized a photoshoot in Italy and France in collaboration with Italian stylist Simona Sbordone and photographer Max Zambelli. Over 120 lights were photographed in four exclusive locations, using collections from across the BROKIS portfolio. The output of the project will be a printed magazine featuring the majority of the photographs, which will be presented to the public this year at Salone del Mobile in Milan and will be available to selected business partners and clients. The project was created as a brand statement and marks the beginning of a new chapter of presentation.

**BROKIS
DESIGN BY**

LUCIE KOLDOVA

DAN YEFFET

BORIS KLIMEK

CHIARAMONTE MARIN

FUMIE SHIBATA

LENKA DAMOVÁ

VRTIŠKA & ŽÁK

LCM MARIN DESIGN STUDIO

FEDERICO PERI

FILIPPO MAMBRETTI

NOVELTIES

DOME



A nod to classical Roman architecture, the new Dome collection of pendant and table lights follows the success of Dome Nomad, an earlier collection inspired by the great domes of Venice and evoking the eternity and expansiveness of the celestial vault. The elegant shade, comprising multiple layers of molten glass, each carefully inspected by the master glassmaker prior to blowing, comes in either smooth or wavy clear glass.

The gentle illumination is cast forth from a modern LED source concealed beneath an opal diffuser. The table lights are a reference to Dome Nomad and represent an elegant interior element. The pendants, with the levity of their delicate arches, are ideal above dining tables, either in multi-light compositions, or as a solitary piece. Dome delivers a unique and charming design experience in both residential and commercial spaces.

DESIGN

LCM MARIN DESIGN STUDIO







STARCLOUD



Set off on a journey through the heavens with this enchanting masterpiece of stellar beauty, a mesmerizing nebula of gracefully intermingling lights cast against the night sky. This bespoke collection of pendants is based on an abstract astral form, which flows seamlessly into three distinct objects, Atria, Lyra, and Vega, each a work of art in its own right among its celestial companions. These stars project a subtly different optical effect depending on the viewing angle, appearing to variably wax and wane or come to rest in a state of symmetry.

DESIGN

Suspended on slender coaxial cables of varying lengths, the delicate handblown glass shades are available in three variants: opaque opaline, pearl pink opaline, and pearl grey opaline. The collection offers six predefined sets of various sizes, each with its own custom ceiling canopy, but there is no limit to how the lights can be mixed and matched in original compositions. Starcloud thus provides a remarkable degree of variability, inviting users to create their own wholly unique interior starscapes.

LUCIE KOLDOVA



PH13781





CONVEX

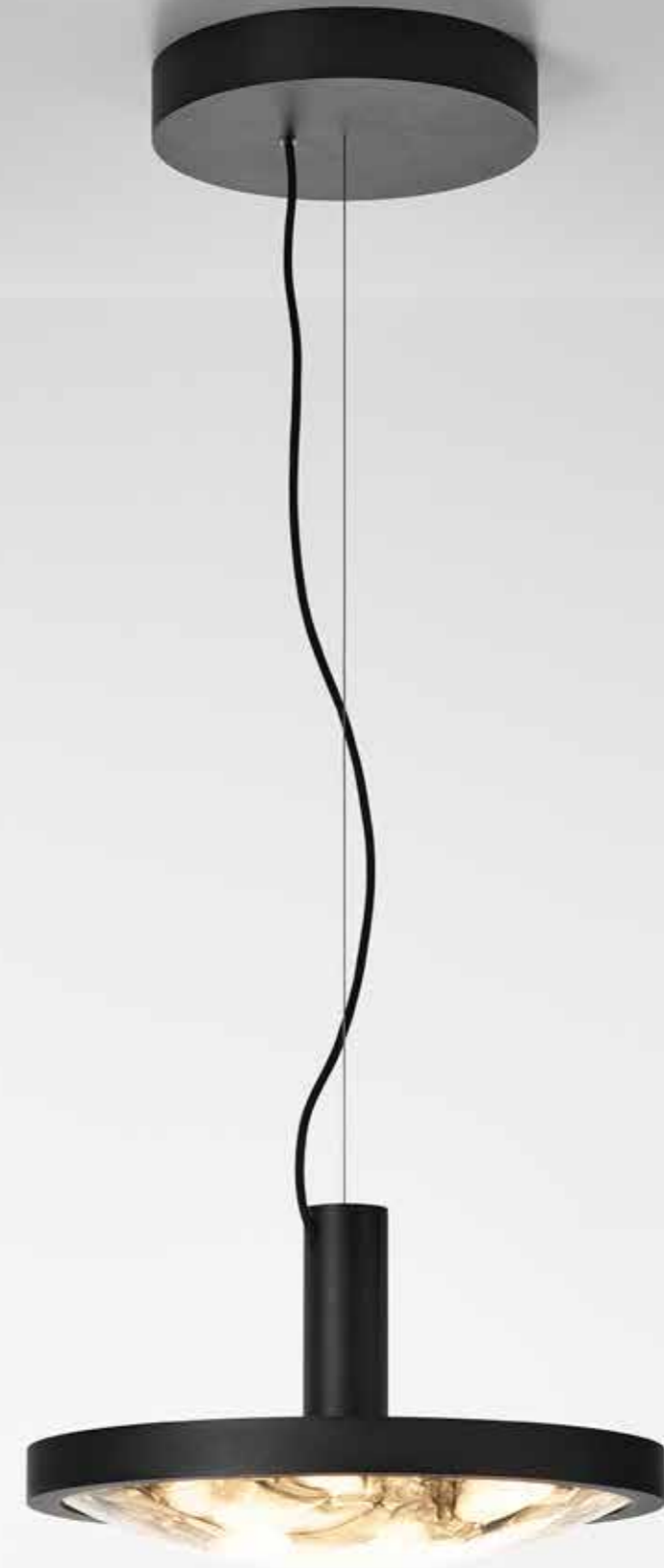


The Convex collection experiments with BROKISGLASS and makes use of its specific properties and processing methods. Designed and manufactured in the form of a convex lens, it pushes the boundaries of function, visual representation, and shaping of this unique and vibrant material. Together with a minimalist, precisely crafted body, it creates an unobtrusive yet unconventional luminaire. The utilitarian design, which highlights the beauty and optical properties of the glass, is well suited

to a broad range of applications in both residential and commercial spaces. The Convex collection comprises a pendant and a wall light, each available in two sizes, whereas the wall variant can also be mounted on the ceiling. Choose from clear triplex opal, or a combination of clear triplex opal and grey triplex opal, where the darker fragments gradually transition to lighter towards the centre of the glass.

DESIGN

BORIS KLIMEK







SPECTRA



CONCEPT 2024

The outline of the light resembles the classic typology of a table lamp, which has always been a companion to humans during evening sessions. The archetypal silhouette in a purity-of-form concept has an opening with a double-sided light source in an aluminium fixture. The flat source casts its light gently in two directions, upwards and downwards into the glass base, creating intimate atmospheric effects. The two sizes are available in transparent, smoke brown, smoke grey, or opaline

glass. The intensity of the experience can be modulated thanks to an integrated dimmer. The shape of the mantle, which serves as the shade and base in one, evokes a sense of levity and loftiness. A specialized method of glassblowing is needed to create the mantle as a single piece. The overall appearance of the light emphasizes the idea that beauty lies in simplicity.

DESIGN

LUCIE KOLDOVA





RIMOWA

PETER LYNCH



BAMBOO FOREST



Bamboo Forest draws inspiration from the vertical contours rising up in stands of bamboo. Conceived to evoke a unique atmospheric ambience, the handsculpted glass forms a bamboo stalk complete with the typical nodal ring, where the material thickens, creating a soft accent in the form of subtle shadows. With different sizes and varying positions of the node on the stalks, thanks to which the origins of the collection are at once recognizable, compositions of multiple lights transform the interior into a sanctuary

DESIGN

replete with the soothing tranquility of a natural bamboo forest. The innovative BROKIS connector enhances the overall variability of the lights by simplifying not only installation of large sets but also maintenance and cleaning. Bamboo Forest is unique for the unusual shape of the lights, which come in six different variants, as well as for the possibilities the collection offers in creating both original combinations and single-point accent lighting in interior spaces.

FUMIE SHIBATA







TROTTOLA



Trottola is a collection of suspension and table lights whose shape elicit memories of a popular childhood toy – the spinning top. The aesthetics of the design are carried on an enchanting luminance that passes through an opal diffusor and opaline glass to reveal a playful contrast of shadows and light. The LED source, visible only from above, is housed in a base clad in pressed aluminium, which in turn is finished in an attractive and

durable black elox. Brightness can be adjusted with a simple turn of the elegant dimmer. Trottola offers two sizes of suspension and table lights in handblown opaline glass. The table variant is fitted with the innovative BROKIS connector, which makes it easy to disconnect the light and move it about the interior and also facilitates disassembly for maintenance.

DESIGN

FEDERICO PERI





PH0120



archiproducts
AWARDS
WINNER

PH0209



PH0031

ELO



Elo, an innovative suspension light combining the distinctive textures of BROKISGLASS with elegant aluminium framing, comprises three articulated arches, the outer two of which can be locked in different attitudes. The unique solution offers a variety of striking scenographic compositions that can shape the interior and lend it a dominant design element. The name Elo means 'ring' or 'bond', words that adeptly express the grand decorative potential and remarkable variability of

the concept, sculptural entity that can be modified and customized as the demands of the setting evolve. The glass is set in elegant metal frames crafted from aluminium, which ensures outstanding structural integrity. Illumination is provided by flexible LEDs that follow the curvature of the arches, underscoring the intrinsic aesthetic beauty of the BROKISGLASS and effecting a charming diffusion of light no matter what configuration the piece is installed in.

DESIGN

FILIPPO MAMBRETTI





archiproducts
AWARDS
WINNER
SUSTAINABILITY



**INTERIOR
LIGHTS**

MUFFINS



The timeless Muffins collection represents an extraordinary lighting experience. Since its market debut, it has taken on an iconic status and become a symbol of the BROKIS brand. The sublimity of the design lies in the masterful combination of delicately contoured glass and solid wood. The lights, featuring a billowing glass shade set in a handcrafted wood

base together with a naked filament bulb, breathe new life into any space and elicit a festive ambience. The collection offers multiple shape and size variants as well as a broad palette of glass colours and woods. To celebrate ten years since the introduction of Muffins, a special anniversary edition was created in 2020 featuring marble and different colours of glass.

DESIGN

LUCIE KOLDOVA, DAN YEFFET







BALLOONS



Balloons, a collection of timeless lights embodying rudimentary forms that evoke images of hot-air balloons, captivates with the beauty of large-format handblown glass and an elegant metal reflector hovering within. The design's charm lies in the use of two independent glass sections to achieve the impression of an integral whole. Lavish proportions and an elegant hand-pressed metal reflector are the collection's defining traits. The

size of the largest shade pushes the very boundaries of glassblowing technology and illustrates the exceptional skill and craftsmanship of Bohemian glassmakers. The Balloons collection is one of the pillars of the BROKIS portfolio. The lights come in three sizes. Balloons also make an outstanding sculptural statement during the day when they are switched off.

DESIGN

LUCIE KOLDOVA, DAN YEFFET







SHADOWS

The Shadows collection is a take on the famed, timeless lights found in French ateliers, and its typology pays tribute to that legacy. The combination of handblown glass, handcrafted wood, and classic shaping has given rise to a light of ageless elegance. The collection comprises four different suspension lights, as striking alone as they are in sets, characterized by a handblown glass shade set upon on a handcrafted wooden fixture. The clean contours and finish are accentuated by the concealed light source. The Shadows collection is special not only for its wide spectrum of glass colour options, surface finishes, and types of wood

but also because the lights can be combined in sets according to customer requirements. They are intended for interiors and, thanks to multiple combination possibilities, are well suited to a broad range of installations. The contours of the Shadows XL collection stay true to the original Shadows collection but are nearly 50% bolder in their proportions. There is also an outdoor version for installation in exterior settings. All the Shadows collections have special integrated connectors developed by BROKIS to facilitate installation and cleaning.

DESIGN

LUCIE KOLDOVA, DAN YEFFET







MEMORY

The Memory collection awakens the imagination and beckons back to a carefree childhood. The wall and ceiling versions in different sizes, the wide range of colour options, and a selection of finishes give this lighting experience a large degree of versatility. The illusion of inflated balloons is flawless right down to the dangling string, which serves to switch the light on and

off. This is beauty in its simplest and most persuasive form. The Memory collection consists of ceiling and wall versions in three sizes. There are also sets that allow multiple lights to be combined on a single ceiling canopy. The collection has been expanded with new colours and shapes in celebration of its ten-year anniversary.

DESIGN

BORIS KLIMEK





CAPSULA

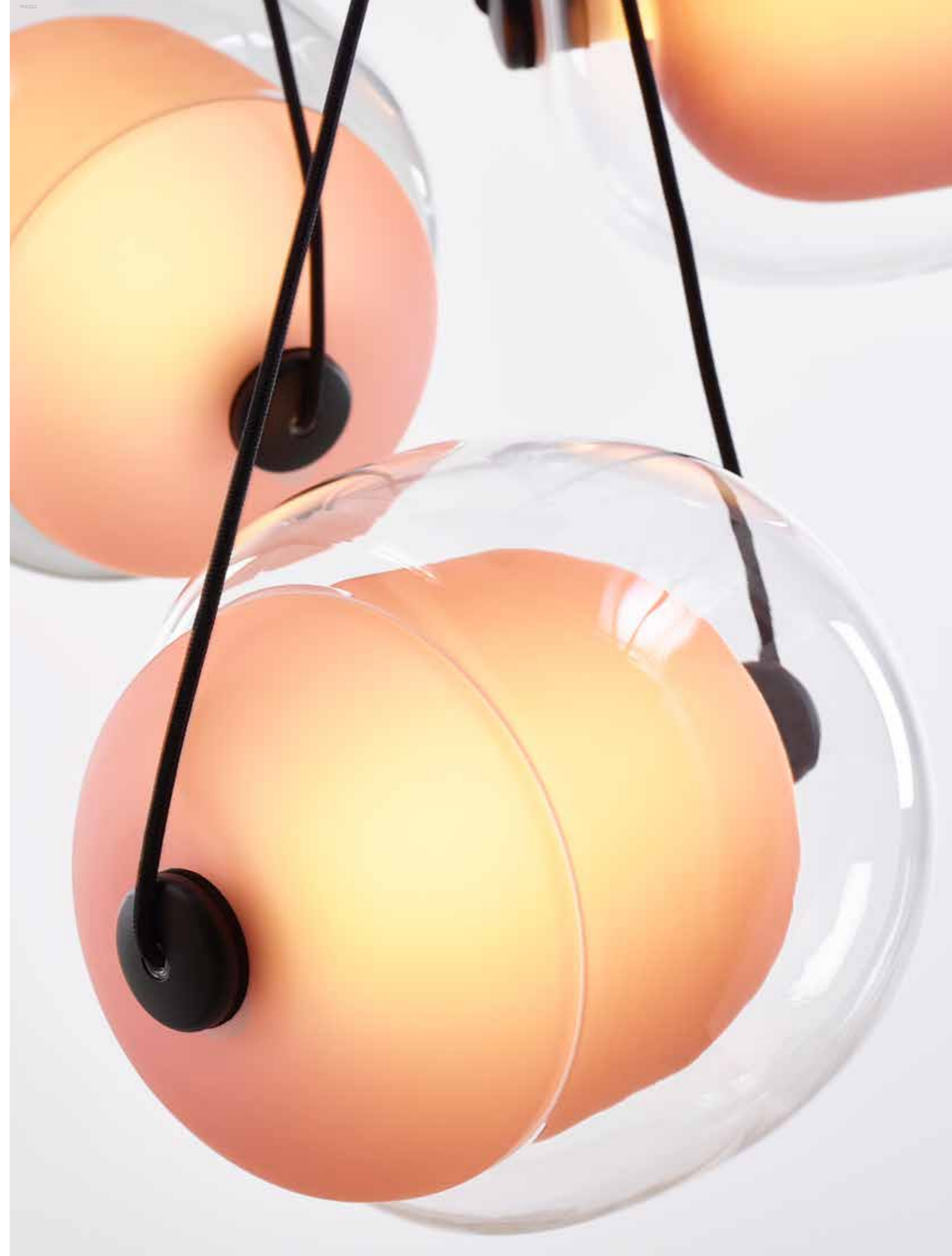


Capsula is a sophisticated and exhilarating light bearing resemblance to a plant cell or seed. The nucleus of the piece is a tubular triplex-glass LED light source, developed by BROKIS, that transects the inner shade and translucent external shell to form a notional axis. The layering and overlapping of these three distinct components give rise to dramatic 3D optical effects. The end caps fasten the components together and serve as anchor points for the creative dual suspension

straps, which also conceal the power cable and allow for variation in the final positioning of the light. The Capsula collection is offered in sets as well as individual lights that can be combined per customer requirements. As of spring 2018, Capsula is fitted with special integrated connectors developed by BROKIS to facilitate installation and cleaning.

DESIGN

LUCIE KOLDOVA





MONA

The Mona collection is based on the concept of penetrating forms. The light source boldly traverses the ample volume of smooth handblown glass to reveal the thrilling tension inherent in the design. The collection's essence, however, lies in its unconventional construction and refined combination of materials. It also boasts dimmable tubular LED light sources, developed by BROKIS, each with a different colour temperature. The entire Mona family has been technologically improved

DESIGN

with innovative connectors and the replacement of the wood components with metal ones. These improvements make it easier to change out the light source and clean the lights. The wall variant is dimmable via an integrated dimmer in the lower part of the metal fixture, and the table variant offers touch dimming. The collection comprises several sizes (S, M, L, XL) and various types of lights (pendant, floor, table, wall).

LUCIE KOLDOVA







WHISTLE

The Whistle collection is, quite literally, a living reference to the work of glassmakers, as inspiration for the design was taken from the blowpipe, which in Czech is known as a glassmaker's whistle. The lucid body of the piece traces the silhouette of a cone of light, and a distinct spotlight with hand-pressed metal shield constitutes its imaginary heart. The overall shape and the naked cable winding

its way up through the body of the light define the character of its simplistic technical form. The collection comprises a suspension light in two sizes as well as a set of three lights. From March 2018, Whistle is fitted with special integrated connectors developed by BROKIS to facilitate installation and cleaning.

DESIGN

LUCIE KOLDOVA





NIGHT BIRDS



Inspired by the abandon and freedom of bird flight, the innovative Night Birds suspension lights impart poetic enchantment and unparalleled dynamism to any interior. Night Birds differ from the other collections in the unique technology applied in production, which involves melting glass into a mould and then bending it. The process makes it possible to instil delicate nuances in the shape of the wings and achieve a coloration of the glass that is different and wholly unique each

DESIGN

time. The collection's restraint and directness are underscored by the minimalist LED light source set in a fixture of lacquered and polished aluminium. The Night Birds collection comprises three lights with different wing attitudes depicting the various phases of bird flight. The lights come in white or dark glass as well as in BROKISGLASS, and there is also an outdoor variant. Night Birds work best in large flocks. The metal components are also available in a black anodized finish.

BORIS KLIMEK





LIGHTLINE



In its every component, the Lightline collection is a celebration of glass as an artistic medium. The concept of a line of light is rooted in the varying characteristics of the material and its forms. The design employs the effect of light uniformly dispersed over a sandblasted surface, which in profile creates the impression of a luminous line. The LED light source is embedded in the

base beneath a metal and triplex opal glass shroud. The upper surface, sandblasted by hand, is treated with a special nano coating to prevent the accumulation of dust and smudges. The collection comprises four table lamps that cast a light of intimate character.

DESIGN

LUCIE KOLDOVA





KNOT



Knot, a collection of stately pendent lights, contrasts two dissimilar materials, two dissimilar notions: gentle curves in clear handblown glass against the austerity of coarse rope. The resulting design is striking, forthright, and dignified at the same time. Full-bodied globes of varying shapes and sizes are penetrated by robust rope ending in the core design element of the collection – the knot – which seemingly pulls the bottom of the glass inward for a bemusing plastic effect. The LED

light source is mounted beneath an elegant hood made of stamped metal and protected from below by a handblown triplex opal diffuser. Another metal component serves to cap the end of the rope. The collection comprises lights of four different shapes in two sizes with a variety of colour options. There's also a romantic table light, which is now available in a version for exterior use as well.

DESIGN

CHIARAMONTE MARIN







PURO



Puro is a boldly minimalistic variation on atmospheric pendent lights. Inspiration for the collection and its name come from the Spanish word for “cigar”, which also means “pure” and is a reference to the composition’s clean lines. The original design in the Puro collection creates an intriguing interplay between horizontal and vertical luminous cigar tubes levitating in space above simple bell lights. The diffused glow of the tubes combines with that of the bells to elicit a dynamic ambience, while the alternating gloss and matte finishes provide a degree of provocation. The first variations to appear were a bell light suspended

beneath a single vertical tube and dual bell lights suspended beneath a single horizontal tube. Multiple tubes can be combined to create amazing installations, such as a screen to divide space and evoke an intimate atmosphere bordering on scenography. The endless variability of the Puro collection gives rise to new lighting objects for any interior. The Puro family – Solo, Single, Spotlight, Eclectic, Contour, Sparkle, and Floor – is available in various sizes in either matte triplex opal or smoke grey glass. Puro have special integrated connectors developed by BROKIS for improved variability and ease of installation and cleaning.

DESIGN

LUCIE KOLDOVA







MACARON



The Macaron table light pays homage to the beauty and complex structures of crystalline stone. Enclosed in opposing domes of delicate handblown glass, the stone becomes a moonscape afloat in its own cosmos. The light source casts its glow upward from the onyx base to energize the meandering chalcedony veins in the centre onyx plate and create a subtle and mesmerizing lighting effect. The concept is based on the principle of illuminating stone, and the name refers to the light's similarity in shape to the famed French meringue confection. Natural imperfections in the glass and the diversity of structures in the stone make each light a

unique original. The purity of the natural materials and the artisanship applied in processing them have given rise to a light of extraordinary ambience. Produced using traditional techniques, Macaron is characteristic of the distinctive and enduring aesthetic of the BROKIS brand. Macaron comes in three sizes – the largest of which also makes an attractive floor light – and in several glass colour options with either white or honey onyx. The collection offers an alternate version featuring a centre plate made of BROKIS in combination with a wooden base.

DESIGN

LUCIE KOLDOVA







BROKIS

114-115

MACARON



BIG ONE



This large-format light with matte core by designer Lucie Koldova embodies a gentle poetry, simplicity, purity, and balanced proportions. A key role is played by the inoculation of luminous bodies and their mutual interaction in space – the light emitted from the smaller glass core flows freely through the atoms of air within the symbolic protective shell of the outer globe, while the sophisticated design of a bubble suspended in a large sphere evokes a sense of levitation. In keeping with the brand's ongoing development of new technologies at the highest levels of quality and

innovation, the Big One collection has received a technological upgrade in the form of a new LED panel that significantly increases the output of the lights. Enhanced metal components simplify handling. The outer glass features a gloss finish in the following colour options: transparent, smoke grey, and a smoke brown transparent. The inner glass features a matte finish in the following colour options: triplex opal, smoke grey transparent, red transparent, light pink transparent, and a smoke brown. The Big One collection is available in two sizes.

DESIGN

LUCIE KOLDOVA





IWY



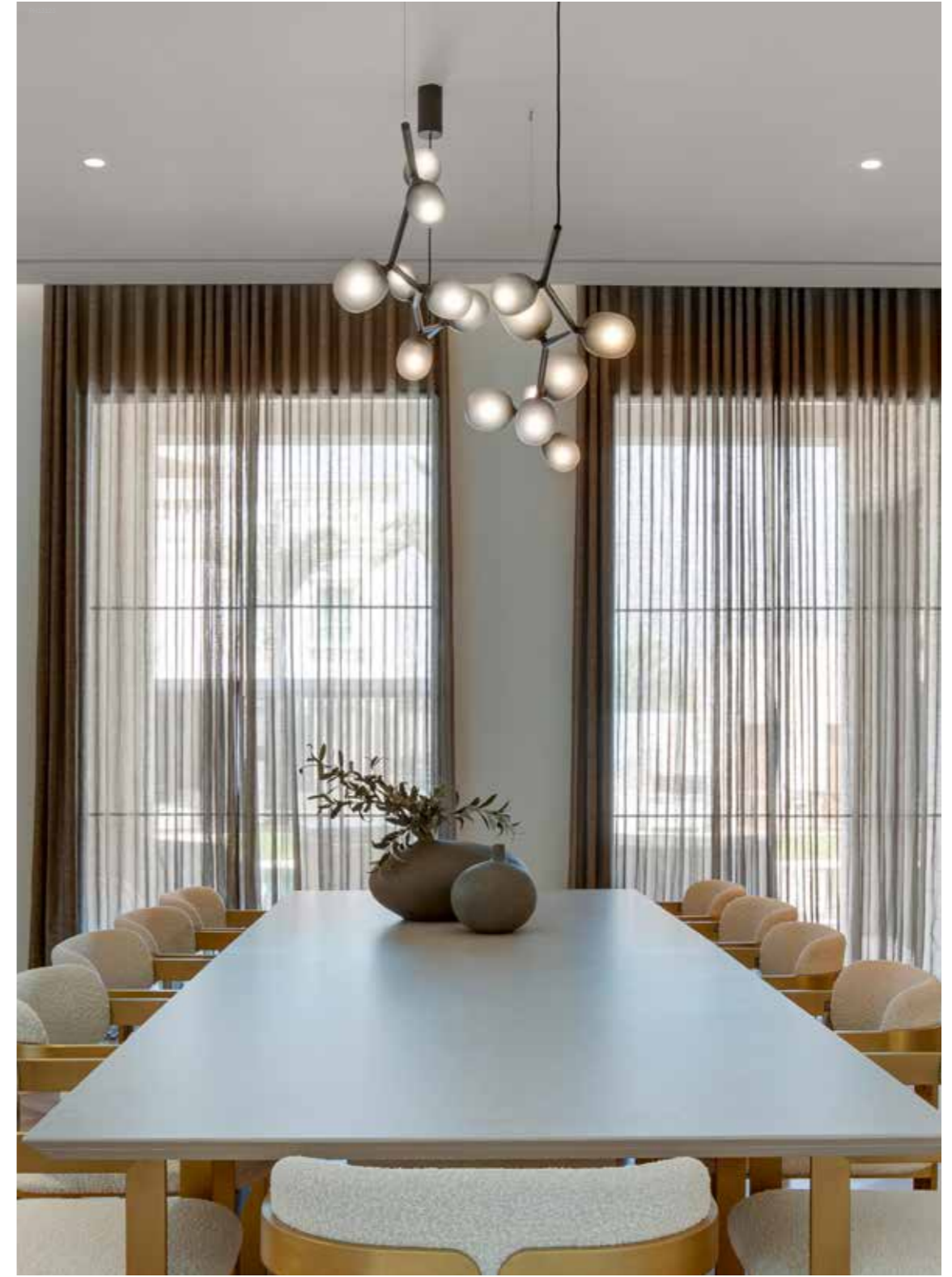
Nature and its life-giving beauty and strength are the inspiration behind the unique lighting concept called Ivy. Just as the plant grows and climbs up the wall of a house, so too can Ivy expand into a variety of compositions. The collection features a special system of modular components and uses coaxial cables for a highly innovative take on decorative suspension lighting that is easy to install and arrange. It also offers striking ceiling and wall variants. The solitary Ivy Single comes in three sizes and is hung separately. The collection comprises metal components in combination with handblown glass. Branches come in six basic sizes, while

there are three sizes of shades in handblown matte light rose, triplex opal, or smoke glass. The collection also offers an impressive floor light and intimate table lights. Elegant and precise in craftsmanship all the way down to the smallest detail, Ivy is a high-tech lighting concept ideally suited to project and residential applications. In household settings, for example, a single graceful branch can be hung above a dining table, or multiple branches can be used to create a curtain of light. The organic Ivy collection has many forms and rightfully holds its place in the realm of artistic, bespoke lighting solutions.

DESIGN

LUCIE KOLDOVA







AWA



In Japanese, the word 'awa' is used to describe a bubble of air trapped within a liquid. The design of this delicate light was inspired by the notion of soft glass that has retained its shape after being inflated. The aim is to give the impression of a luminous ball of air floating gently in space when viewed from below.

DESIGN

Another special characteristic of the design is that the wood and metal parts appear to be made of glass, as if they were stoppers keeping the air from escaping. A recent addition to the collection is a version featuring frosted glass in the top half of the light.

FUMIE SHIBATA





BONBORI



The Bonbori collection, which was created by world-renowned Japanese designer Fumie Shibata, is available in indoor and outdoor variants. The light is inspired by the traditional paper lamps that line the paths to shrines and temples during the annual paddy harvest festivals in Japan. In Japanese, the word 'bonbori' not only denotes this traditional form of lighting, but it also describes the soft light coming from within a snowy cave. The gentle light of Bonbori pays tribute to a traditional Japanese

lantern. Its skilfully crafted handblown glass and soft luminescence create a magical and festive ambience to be enjoyed as thoroughly in solitude as with family and friends. The indoor light features special connectors developed by BROKIS that make it easy to unplug and move outside to a covered exterior space, for instance. Also available in a wall variant engineered for both interior and exterior installation.

DESIGN

FUMIE SHIBATA

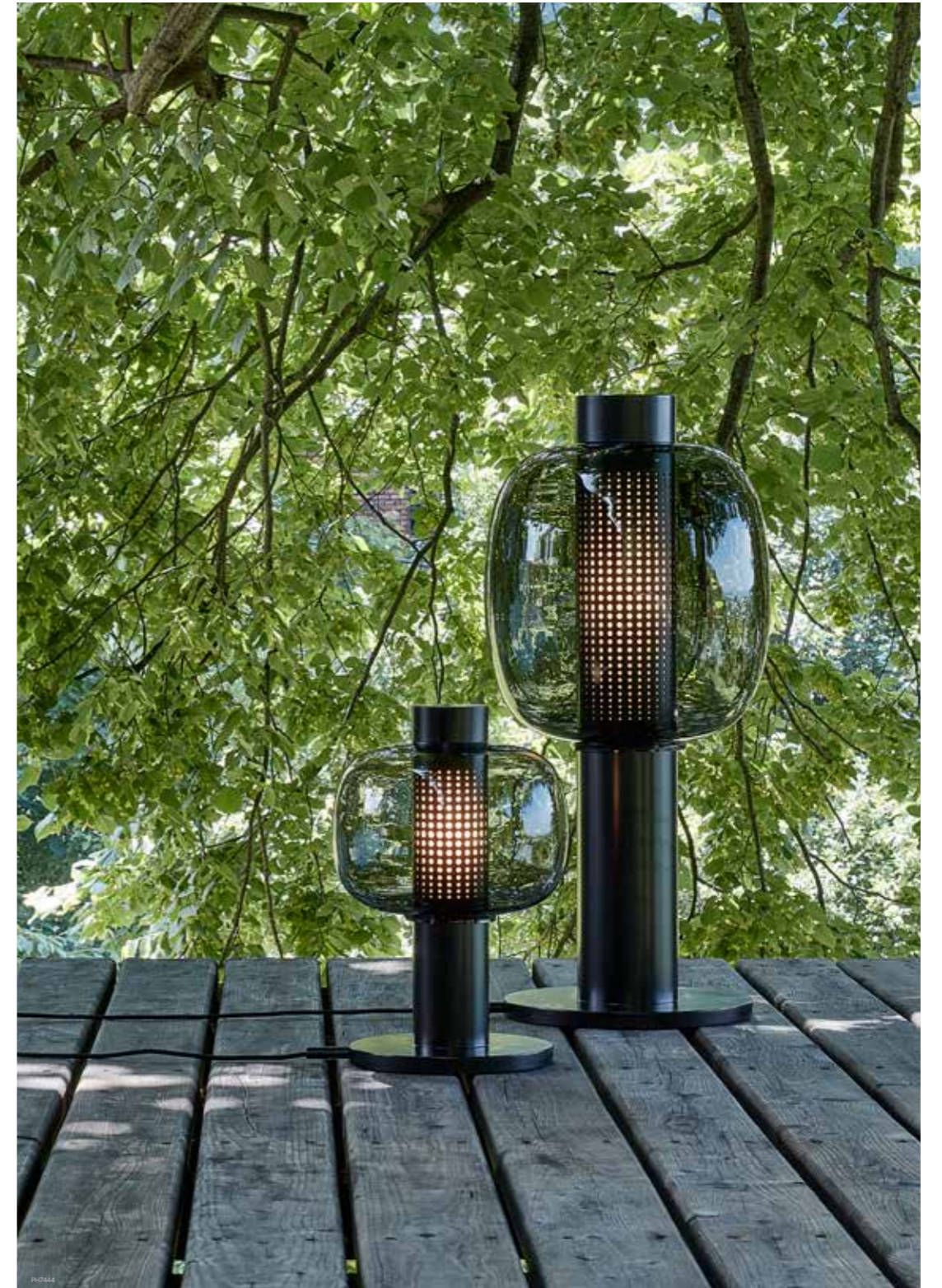




PH0542



PH0792



PH0544

SFERA



The Sfera collection, one of the mainstays of the BROKIS portfolio, comprises three shapes and several sizes. Sfera lights are designed to meet the needs of projects and the architects and other professionals behind them. The sphere as a universal shape is joined by an oval in two sizes also featuring a dramatically sheared top. The prevailing characteristic of the Sfera project light is a clean cut across the top that serves as a platform for an elegant decagonal fixture. The timeless object casts a gentle light through handblown matte opal glass, which is attached to a metal plate featuring a subtle multiangular detail. The original sphere

comes in eight sizes ranging from 150 to 600 mm and thus offers a considerable degree of variability in interior installations, while a practical hexagonal BROKIS connector makes it easy to install, maintain, and clean large sets of lights as well as rearrange them without having to alter the interior. The universal beauty and simplicity of the Sfera collection mean it can be used in any space and in any number, from a single light as an elegant accent to large bespoke compositions containing various sizes and shapes.

DESIGN

LUCIE KOLDOVA





GEOMETRIC



Geometric accentuates the aesthetic expression and structure of BROKISGLASS, which itself is remarkably distinctive. The collection is defined by basic geometric shapes that characterize the overall contours of the lights and instill them with a singular graphic element to achieve a striking contrast with the animate, almost sculptural makeup of the glass. The suspension components comprise glass geometric shapes, their edges rendered in black profiles. The circular and oval lights work well as solitary pieces, and multiples can also be arranged in a sort of jigsaw puzzle, which in the hands of architects results in an endless variety

of lighting combinations. The concept surpasses its primary function as a lighting fixture and opens the door to large-format blocks of light and other uncommon compositions. For even more expressive freedom and a truly bespoke lighting experience, clients can specify a different colour of glass in each of the two sections of a light. Resting against a sturdy cylindrical base, the Geometric Table elicits a subtle aesthetic tension that amplifies the overall visual experience. The Geometric collection has received a technological upgrade in the form of precision-milled dural for the metal profiles.

DESIGN

BORIS KLIMEK, LENKA DAMOVÁ



PH088



PH088

PLANETS



The Planets collection is based on period lights and reflects the daily needs not only of customers but of architects and designers too. Thanks to a simple physical principle, the lights can be variably positioned in diverse arrangements. The use of weights and pulleys makes it possible to quickly adjust the height of the lights, a unique system that allows for several groupings to serve as individual sources of light in an interior, or as multiples of three different (or same) shapes to illuminate larger spaces. The counterweight is precisely calibrated to the specific weight of the light, so adjusting it is safe and easy. A round LED panel

is situated beneath a shade of matte glass, which conceals the internal parts and thus preserves the silhouette of the light. The metal components also come in a matte finish and are combined with a textile cord for a uniform look. The colour scheme is always monochromatic to underline the graphic character of the lights, and the glass shades are rendered in elementary geometric shapes – sphere, cone, and capsule. The Planets collection stands out with its remarkable versatility, offering a broader dimension in interior lighting with installations ranging from a single light to vast clouds of up to twelve lights.

DESIGN

VRTIŠKA & ŽÁK





ORBIS



The Orbis collection is based on a universal shape rendered in handblown smoke glass that has been abruptly severed across the top to accommodate an elegant multiangular metal fixture. Rich in ambience yet enticingly minimalist, these atmospheric lights embody a sense of technicism. A diffuser conceals an LED panel within the fixture and softens the light as it radiates outwards from its source, while the multiangle serves to house a special BROKIS connector engineered for easy installation and arrangement of

DESIGN

grand lighting compositions. Additional variability is provided by a choice of subtle grey smoke glass, with the metal fixture finished in a black powder coating that underscores the gloss of the transparent glass. These refined components come together to create an unmistakable interior charm well suited to large restaurant and hotel spaces as well as intimate private interiors. Now available with glass in one of several colour options, each of which is paired with metal components in a predetermined corresponding colour.

LUCIE KOLDOVA





DOUBLE



Double, a collection of elegant pendent lights, is based on a shape comprising double elements crafted from different materials – glass and lightweight aluminium. These materials depend on one another to generate a unique and consonant form. The glass globe terminating in a metal ring provides a suggestive effect, with the handle on top alluding to the idea of portability. In the pendent variant, which is available in three different shapes, the upper metal section with wire rope seeks equilibrium in the scattered light and shadows as they

pass through the lower metal ring and globe, while the latter consists of multiple layers of molten glass that are carefully scrutinized by the master glassmaker prior to blowing. The luminance of the LED light source is softened by a diffuser. By virtue of its scope, the Double collection is ideal for private interiors and works very well in large compositions and colour combinations. The collection has been expanded with table and floor variants.

DESIGN

LCM MARIN DESIGN STUDIO



archiproducts
DESIGN AWARDS
2022
WINNER



OVERLAY



Modern yet timeless. Extravagant in its style and use of clean geometric forms. Inspired by architecture. The Overlay collection arose from a synthesis of various materials on mood boards during a creative process that involved seeking ideas and associations between art and design, overlaying different textures, and playing with volumes. The blown transparent glass tubes instill the Overlay collection with a distinctive character, as does the unique concrete fixture embedded with shards of upcycled glass from Janštejn Glassworks. The piece is cast in different rectangular volumes specifically

for each type of light capable of accommodating both simple and multiple assemblies for a remarkable degree of versatility. Cradled within the concrete fixture is a delicate sleeve of either frosted or clear glass, its centreline struck by a light tube that seemingly levitates within. The typology of the Overlay collection comprises horizontal pendant variants, table lights, and wall lights that open the door to a new realm of possibilities in lighting art. The collection has been expanded with other variants.

DESIGN

LUCIE KOLDOVA







PRISMA



The dominant feature of the Prisma collection is an extravagant metal fixture with a distinctive finish. Classic handblown glass spheres are anchored to either one or both ends of a robust decagonal metal prism that lends the collection its name. The shape in combination with the striking surface reflect light at different and unexpected angles, like a prism. With a choice of three different elegant finishes – yellow zinc lacquer, brushed steel lacquer, and a new burnished black lacquer, the light is a bold artistic object in the interior offering unique vertical, horizontal, and diagonal compositions

with subtle colourful reflections. The collection consists of a horizontal pendent light with dual glass spheres and a vertical pendent light with a single glass sphere, both of which hang from wire ropes. Another typological variant is an impressive floor light, a majestic light sculpture in the form of a robust upright decagon topped with a luminous glass sphere. The structured finish on the metal fixture is one of the defining traits of the collection, and together with transparent glass or grey smoke glass constitutes a jewel with which to adorn private interiors as well as hotels and restaurants.

DESIGN

LUCIE KOLDOVA







**EXTERIOR
LIGHTS**

BONBORI OUTDOOR

The very first outdoor lighting collection in the BROKIS portfolio, Bonbori was created by world-renowned Japanese designer Fumie Shibata, who took inspiration from the traditional paper lamps that line the paths to shrines and temples during the annual paddy harvest festivals in Japan. In Japanese, the word "bonbori" not only denotes this traditional form of lighting, it also describes the soft light coming from within a snowy cave. Manufactured in compliance with the IP44 rating for outdoor use, the light makes use of a simple stainless-steel base finished in an environmentally friendly weather-resistant powder coating. The easily

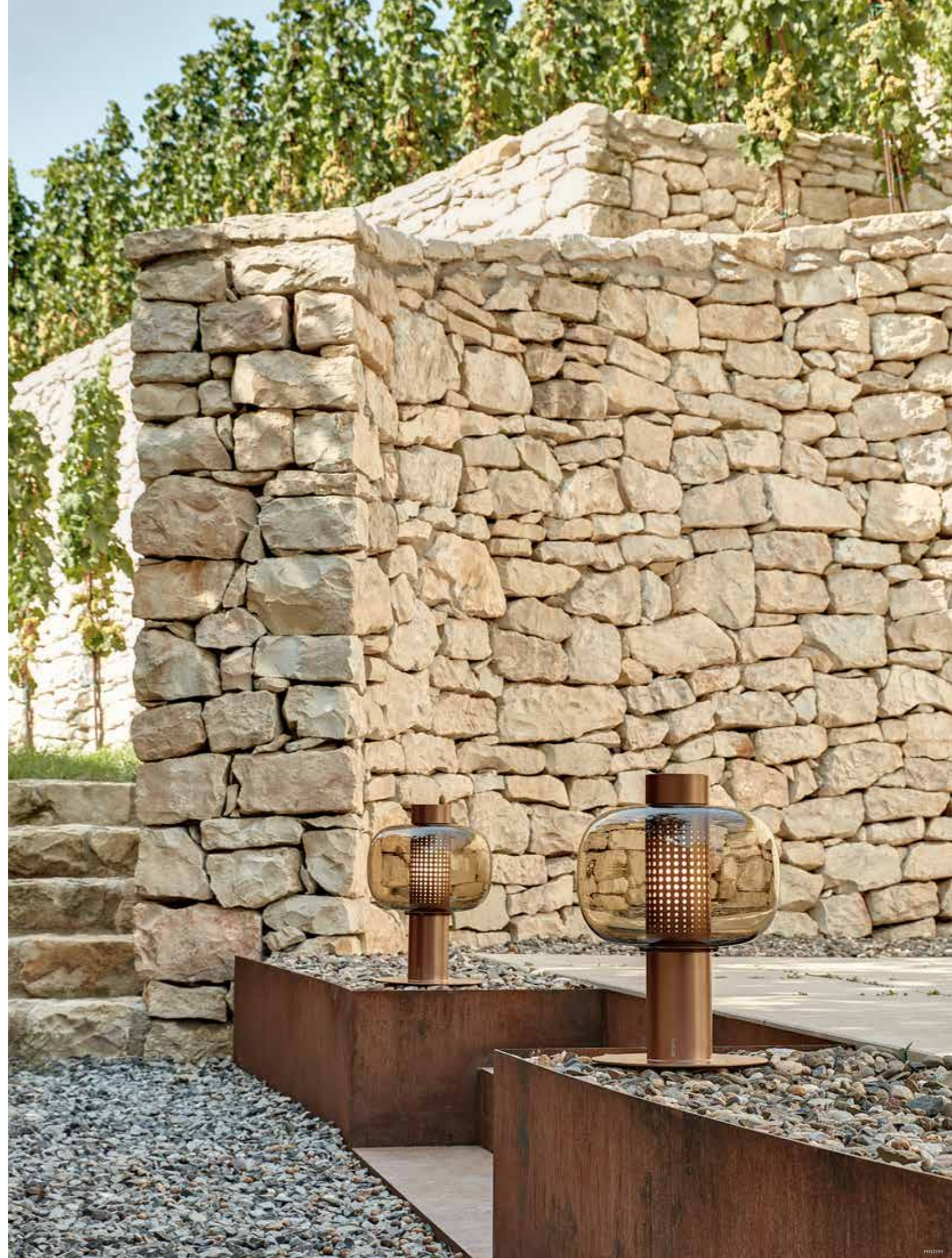
removable LED light source, which can withstand below-freezing temperatures, casts a gentle glow through a diffuser and laser-cut openings in the stainless steel. The likeness to the traditional bonbori lamp is achieved with an elegant handblown glass shade, an extraordinary piece crafted from multiple layers of carefully moulded glass. Whether in the garden, on the terrace, or in other outdoor settings, the soft, gentle light of Bonbori pays tribute to a Japanese tradition by creating a unique and festive ambience to be enjoyed as thoroughly in solitude as with family and friends.

DESIGN

FUMIE SHIBATA








archiproducts
DESIGN AWARDS
—
WINNER 2020

SHADOWS EXTERIOR

The iconic Shadows collection by Lucie Koldova and Dan Yeffet is ready to illuminate exterior settings. Shadows is a take on the famed, timeless lights found in French ateliers, and its typology pays tribute to that legacy. Identical in appearance to the original Shadows, the collection complies with the IP54 rating for exterior use: the handmade wooden body used in the indoor lights has been replaced with a two-piece weatherproof dural body, its subtle form and finish

accentuated by a recessed LED light source. Special integrated connectors developed by BROKIS make it easy to install the lights in large sets as well as maintain and clean them. The lights can be arranged in diverse compositions based on the needs of the customer or used as solitary exterior lighting elements. The combination of handblown glass and classic shapes has given rise to lighting of unageing elegance whose singular ambience is no longer restricted to the interior.

DESIGN

LUCIE KOLDOVA, DAN YEFFET





NIGHT BIRDS EXTERIOR

The Night Birds collection by Boris Klimek is available in a version suitable for exterior use. Night Birds Exterior are identical to the original indoor collection, which was inspired by the freedom and abandon of bird flight. In order to withstand the whims of the weather, the lights have been modified to comply with the IP54 rating for exterior use, namely by enlarging and weatherproofing the positionable hand-polished dural fixture, which conceals a sophisticated balancing mechanism and

the subtle LED light source. The bigger, more robust metal fixture also allows for a greater selection of light sources. Like the original Night Birds collection, Night Birds Exterior offers three different lights, each with a different wing position, which come in either white or dark (nearly black) variants. Night Birds are as at home in the elements or the dark of night as they are in the comfort of the indoors.

DESIGN

BORIS KLIMEK





**BATTERY-POWERED
LIGHTS**

KNOT BATTERY

Knot, a collection of stately pendent lights that appose two dramatically dissimilar materials, has been expanded with a portable outdoor variant. The original Knot collection features full-bodied globes of varying shapes and sizes penetrated by robust cords that seemingly pull the glass inward for a bemusing plastic effect. Knot Battery provides the perfect anchor for the lofty pendants in this collection typified by its use of strikingly disparate materials. The LED light source is cradled in a handsome bottom piece, which, like the cord end cap, is fashioned from refined metal.

DESIGN

Knot Battery is IP44 compliant for outdoor use, thus its charm is not confined to only the interior. Charging is by means of a convenient magnetic connector in the lower part of the light. Knot Battery is a sophisticated and flexible light that provides up to six hours of use on a single charge, which makes it ideal not only for lighting outdoor spaces but also enhancing existing lighting. Thanks to its portability, Knot Battery is well suited to daily use and for adding a special touch to social events. Also available in a smaller variant.

CHIARAMONTE MARIN





IVY BATTERY

Ivy Battery by Lucie Koldova is the latest addition to the already substantial Ivy family, which is inspired by nature and its life-giving beauty. The battery-powered table version is somewhat smaller than the original Ivy Table, which makes it easy to move from one place to another and create unique lighting experiences anywhere, anytime. Although it is not protected from direct contact with water, its portability and robust build quality make it suitable for use in outdoor settings. Ivy Battery is touch operated and has three brightness

settings for just the right amount of light at a given moment. The lithium battery pack powers the light for up to six hours, and charging is by means of induction or a USB connector. The collection comprises a metal frame and handblown glass shades in matte light rose, triplex opal, or smoke grey. The Ivy Battery represents a graceful and flexible lighting object for restaurants and hotels, where it can be unrestrainedly combined in luminous landscapes that change in step with the space around them.

DESIGN

LUCIE KOLDOVA





DOME NOMAD

The outdoor collection called Dome Nomad takes inspiration from the domes of Venice. Dome Nomad is an outdoor lamp whose dome shape represents eternity and the vastness of the celestial vault. The dome shape of the handblown glass section comes in one of two variants: smooth clear glass or wavy clear glass. Dome Nomad is a portable rechargeable outdoor lamp, the lines of which are a nod towards Italian architecture. The gentle light passes through an opal diffuser and the namesake glass shade. The Dome Nomad collection complies with the IP44 safety

and technological standards for outdoor lighting. The simple design features refined stainless steel finished in an environmentally friendly powder coating for outstanding resistance to the elements. The LED source can withstand freezing temperatures. Multiple layers of molten glass are used to make the glass shade, and each one is subjected to the utmost scrutiny by the master glassmakers before being blown into the mould. Dome Nomad can be placed on a table or floor. It is a design experience that adds a special charm both to gardens and terraces as well as to interior spaces.

DESIGN

LCM MARIN DESIGN STUDIO





SFERA PORTABLE

Sfera Portable is a rechargeable outdoor light that comes in two sizes. It is one of the latest additions to the BROKIS outdoor lighting portfolio. Sfera Portable is based on the idea of a small sphere of light set within a poured concrete base with the same subtle multiangular detail used throughout the Sfera family. The delicate sphere of handblown matte or gloss glass resides beneath a stainless-steel hoop, which serves as a handle for moving the light from one place to another. The concrete base houses not only the charging module but also a sensitive touch dimmer with which to adjust the brightness. Sfera Portable is

DESIGN

fitted with an LED light source with diffusor and meets the safety and technological standards of the IP44 rating for outdoor use. The sphere as a timeless and perfect shape whose allure never ceases to capture the imagination. Handblown glass anchored in a raw, almost brutalist concrete base is an excellent match for modern architecture, but it can also be used to great effect when set in contrast with historical architecture. Sfera Portable is a stylish atmospheric lighting object designed for both outdoor and indoor use. Thanks to its simple construction, the light can be easily picked up and moved to change the ambience of any space.

LUCIE KOLDOVA





ACCESSORIES

MUFFINS CANDLEHOLDER

Muffins Candleholder is a captivating experience to be enjoyed both by day and by night. With its subtle lines in glass, solid wood base, and masterful craftsmanship, not only will the Muffins Candleholder reveal something of

your sense for detail and exquisite design, but it will also lend your room a festive air any time of the day or night. The Muffins Candleholder is part of the iconic Muffins lighting collection, an emblem of the BROKIS brand.

DESIGN

LUCIE KOLDOVA, DAN YEFFET





OTHER

IMPORTANT INFORMATION

BROKIS products and services can be found on the latest version of our website – www.brokis.cz. Our sales partners are regularly informed of news and any changes to products and/or services. In order to streamline cooperation with our sales partners and promote sales of our products and services, we've created new marketing tools, which are available through the MY BROKIS partner platform at www.mybrokis.cz. These tools, which include ordering, informative documents, PR materials, and an overview of complementary services, support product sales growth and help us develop. BROKIS is also introducing optional product registration, which will allow customers to verify the authenticity of their lights. More information on product registration can be found in a special QR code at the end of the catalogue.

Complete
specification
for each
photo/PH below:



LOCATION PHOTOGRAPHS

38	39	44	45	56	57	58
PHOTOGRAPHER — Max Zambelli						
ART DIRECTION AND STYLING — Simona Sbordone						
59						
PHOTOGRAPHER						
AND INTERIOR DESIGN — Terraza Balear						
65						
PHOTOGRAPHER — Max Zambelli						
ART DIRECTION AND STYLING — Simona Sbordone						
68						
ARCHITECTURE — Esteva i Esteva Arquitectos						
INTERIOR DESIGN — Terraza Balear						
PHOTOGRAPHER — Mauricio Fuertes						
71						
PHOTOGRAPHER — Peter Baas						
INTERIOR DESIGN — Design studio Wolterinck						
81						
PHOTOGRAPHER — Thomas de Bruyne						
cafeine.be						
84						
PHOTOGRAPHER — Max Zambelli						
ART DIRECTION AND STYLING — Simona Sbordone						
92						
PROJECT AND STYLING — Lichthuis Mol, Belgium						
100						
PHOTOGRAPHER — Max Zambelli						
ART DIRECTION AND STYLING — Simona Sbordone						
102						
Courtesy of Minotti						
112	113	114	118	119	129	
PHOTOGRAPHER — Max Zambelli						
ART DIRECTION AND STYLING — Simona Sbordone						
122	123					
DESIGN — Masina House Design						
158	159					
PHOTOGRAPHER — Jan Zima						
168	169					
PHOTOGRAPHER — Max Zambelli						
ART DIRECTION AND STYLING — Simona Sbordone						
174						
PHOTOGRAPHER — Zbynek Krulich						
193						
PHOTOGRAPHER — Max Zambelli						
ART DIRECTION AND STYLING — Simona Sbordone						

LINKTREE



Linktree is a platform that brings all important links together in one place.

LINKTREE
SOCIAL MEDIA



BROKIS
STORYLINE



BROKISGLASS



BROKIS
SOLUTIONS



MY BROKIS



TECHNICAL INFORMATION
ABOUT PRODUCTS



cleaning information
and unboxing



technical
information



product
registration

BROKIS, s.r.o.

OFFICE

Španielova 1315/25
163 00 Prague 6
Czech Republic

SHOWROOM

Sídliště Janštejn 39
588 52 Horní Dubenky
Czech Republic

www.brokis.cz
info@brokis.cz

DESIGNERS

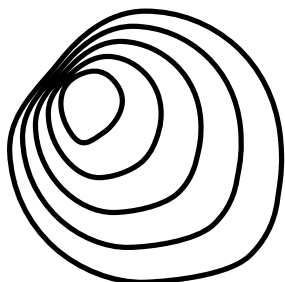
Lucie Koldova
Dan Yeffet
Boris Klimek
Chiaramonte Marin
Fumie Shibata
Lenka Damová
Vrtiška & Žák
LCM MARIN design studio
Federico Peri
Filippo Mambretti

PHOTO

Martin Chum
Adéla Havelková
Denisa Řepková
Studio Salaris
SUPREMA
Studio VOKO

GRAPHIC DESIGN

Studio VOKO



BROKIS®



CM11700